

ARCHITECTURE AUSTRALIA
NOV/DEC 2014

**2014
NATIONAL
ARCHITECTURE
AWARDS**

AAA

VOL. 103 NO. 6 AS14.95
9 770003 872003 06



Cover image
CB Alexander College, Tocal by Ian McKay and Philip Cox,
Architects in Association. Photography: Max Dupain

DIRECTION

- 9 Foreword**
Letter from David Karotkin,
National President of the Australian
Institute of Architects
- 10 Reflection**
Editorial director Cameron Bruhn
muses on the Zeitgeist of global
architectural discourse

YEAR IN REVIEW

- 13** A look back at a selection of events
that shaped Australian architecture
in 2014.

DOSSIER

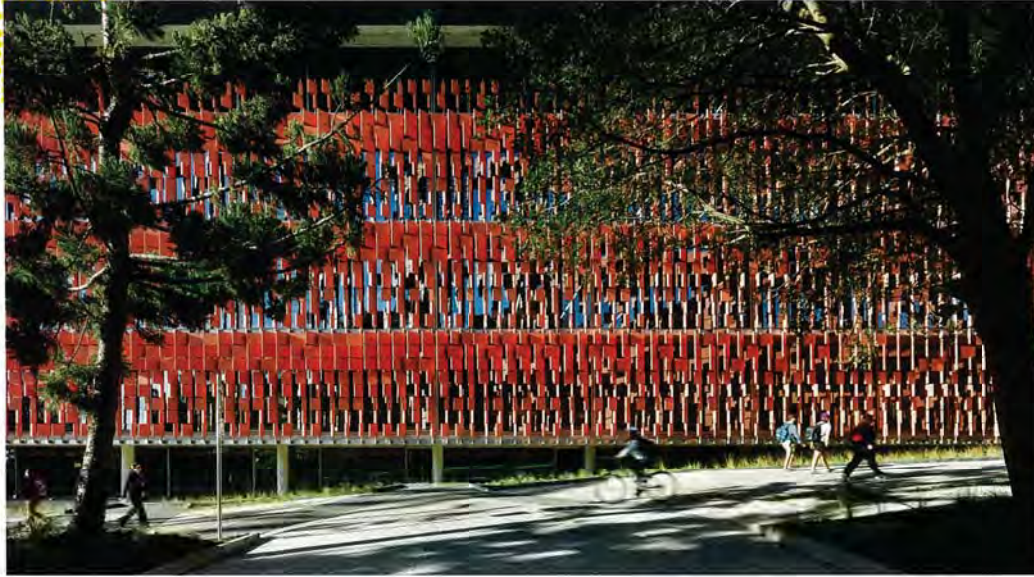
- 21 Reverse ruins: The 2014 Venice
Architecture Biennale**
Karen Burns reflects on this year's
Biennale, which explored relations
between past and present.
- 26 Anne Zahalka's portrait of
a building**
Suzie Attiwill reviews photographer
Anne Zahalka's latest commission,
which documents the life inside
Canberra's Parliament House
- 31 David Adjaye on geographic
specificity**
At the 2014 National Architecture
Conference in Perth, Anna
Tweeddale spoke with Adjaye
about the peculiarities of place
- 37 Parametric thinking:
Trifolium by AR-MA**
Sam Spurr talks to Robert Beson
about Trifolium, commissioned
by the Sherman Contemporary
Art Foundation

NATIONAL ARCHITECTURE AWARDS

- 44 Jury Overview**
Jury chair Paul Berkemeier on
the deliberations of the National
Architecture Awards jury
- 46 Public Architecture**
The Sir Zelman Cowen Award
UQ Advanced Engineering
Building by Richard Kirk Architect
Hassell Joint Venture
- National Awards**
Prince Alfred Park + Pool Upgrade
by Neeson Murcutt Architects in
association with City of Sydney
Australian PlantBank by BVN
Donovan Hill
- UTAS Institute for Marine &
Antarctic Studies by John Wardle
Architects + Terroir, in Association
Dallas Brooks Community Primary
School by McBride Charles Ryan
Dandenong Mental Health Facility
by Bates Smart Whitefield McQueen
Irwin Alsop Joint Venture
- National Commendations**
North Bondi Surf Life Saving Club
by Durbach Block Jaggers in
association with Peter Colquhoun
South Australian Health and
Medical Research Institute by
Woods Bagot
- 56 Residential Architecture –
Houses (New)**
The Robin Boyd Award
House at Hanging Rock by
Kerstin Thompson Architects
- National Award**
Oxlade Drive House by
James Russell Architect
- National Commendations**
Southern Outlet House by
Philip M. Dingemans
Hover House by Bower Architecture
- 62 Residential Architecture
– Houses (Alterations
and Additions)**
**The Australian Institute
of Architects Award**
Bellevue Terrace
Alterations + Additions by
Philip Stejskal Architecture
- National Award**
West End Tower by Owen
and Vokes and Peters
- National Commendation**
Strohmayr House by
Troppo Architects
- 66 Residential Architecture
– Multiple Housing**
The Frederick Romberg Award
The Commons by
Breathe Architecture
- National Award**
UNSW Kensington Colleges
by Bates Smart
- National Commendation**
Gantry by Bates Smart
- 72 Commercial Architecture**
The Harry Seidler Award
White Bay Cruise Terminal
by Johnson Pilton Walker
- National Awards**
8 Chifley Square by Lippmann
Partnership / Rogers Stirk
Harbour & Partners
- Bread in Common by spaceagency
- National Commendation**
Pahran Hotel by Techne Architects
- 78 Heritage**
The Lachlan Macquarie Award
Eternity Playhouse by Tonkin
Zulaikha Greer Architects
- National Commendation**
Former Police Station, 127–129
George Street, The Rocks by Welsh +
Major Architects with Sydney
Harbour Foreshore Authority
- 82 Interior Architecture**
The Emil Sodersten Award
UQ Advanced Engineering Building
by Richard Kirk Architect Hassell
Joint Venture
- National Awards**
Hotel Hotel by March Studio
Garangula Gallery by Fender
Katsalidis Mirams Architects
- Sustainable Industries Education
Centre by MPH Architects +
Architectus in association
Bread in Common by spaceagency
- 90 Urban Design**
The Walter Burley Griffin Award
Prince Alfred Park + Pool Upgrade
by Neeson Murcutt Architects in
association with City of Sydney
- National Award**
GASP! Stage 02 by Room 11
- 94 Small Project Architecture**
The Nicholas Murcutt Award
Bicheno Surf Life Saving Club +
Boathouse by Birrelli Art +
Design + Architecture
- National Awards**
Balmain Apartment by
Durbach Block Jaggers
Kew Studio by Sean
Godsell Architects
- National Commendation**
Studio 217 by Amalie Wright
& Richard Buchanan
- 100 Sustainable Architecture**
The David Oppenheim Award
The Commons by
Breathe Architecture
- National Awards**
The Wayside Chapel
by Environa Studio
Australian PlantBank by
BVN Donovan Hill
UQ Advanced Engineering
Building by Richard Kirk Architect
Hassell Joint Venture
- 106 Enduring Architecture**
National Award
CB Alexander College, Tocal
by Ian McKay and Philip Cox,
Architects in Association
- 109 Steel Architecture**
The National Colorbond Award
White Bay Cruise Terminal
by Johnson Pilton Walker
- 110 International Architecture**
The Jørn Utzon Award
Stonehenge Exhibition + Visitor
Centre by Denton Corker Marshall
Award
Shelter@Rainforest by
Marra + Yeh Architects

UQ ADVANCED ENGINEERING BUILDING

RICHARD KIRK ARCHITECT HASSELL JOINT VENTURE



JURY CITATION

The jury was greatly impressed by this project, which has been designed as an open vessel for learning. Facilities and learning processes are highly visible to inspire both students and visitors. The architects have taken an extremely complex program – including teaching spaces, a 500-seat auditorium, laboratories, research facilities and office spaces – and resolved a building that is also a delightful space to occupy.

Set within the subtropical climate of the University of Queensland's St Lucia campus, the building houses the School of Civil Engineering and the Queensland Centre for Advanced Materials Processing and Manufacturing. Three volumes feed off a central "street," a scheme which works both in plan and in section. A sense of discovery pervades the building, with key spaces open to view and explained to assist the learning process.

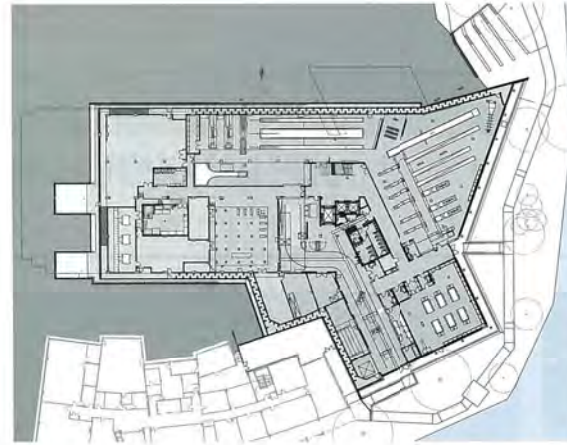
Clear planning, innovative, flexible spaces and laboratories that allow for progressive teaching contribute to the success of this building. The large foyer has been used as a showcase for manufactured goods, displaying manufacturing processes and materials.

The whole project has become a "living building" to allow for finite measuring and monitoring of its performance in climatic and structural terms. The aim of the building is to be a lifelong learning tool directly related to the student curriculum.

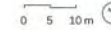
As a public facility, this building excels. It has also been designed as a 5 Star Green Star building and therefore forms a new benchmark in sustainability in the subtropical region. This is an important achievement, with the potential for broad application throughout the community.

UQ ADVANCED ENGINEERING BUILDING WAS REVIEWED BY HAIG BECK AND JACKIE COOPER IN ARCHITECTURE AUSTRALIA JAN/FEB 2014. SEE ARCHITECTUREAU.COM/ARTICLES/ADVANCED-ENGINEERING-BUILDING

ARCHITECT Richard Kirk Architect Hassell Joint Venture / **project team:** Yee Jien, Peter Hastings (project architects); Richard Kirk, Mark Loughnan (design architects); Paul Chung, Andrew Drummond, Fedor Medek, Jonathon Ward, Stephen Chandler, Adam Lanning, Mitch Reed, Erik Sziraki, Mark Roehrs, Mark Craig, Daniel Loo, Troy King, BP Loh, Nguyen Lau, Mac Young, Catherine Van Der Heide **STRUCTURAL, CIVIL, ELECTRICAL, LIGHTING AND COMMUNICATIONS CONSULTANT** Aurecon **MECHANICAL, HYDRAULIC AND SERVICES CONSULTANT** WSP Group **LANDSCAPE** Hassell **INTERIOR DESIGN** Richard Kirk Architect and Hassell **ACOUSTIC CONSULTANT** Arup **COST CONSULTANT** Rider Levett Bucknall **PROGRAMMING CONSULTANT** R T M **BUILDER** Watpac **PROJECT MANAGER** Peter Sampson, University of Queensland **PHOTOGRAPHY** Peter Bennetts



FIRST FLOOR PLAN
1:1000



UQ ADVANCED ENGINEERING BUILDING RICHARD KIRK ARCHITECT HASSELL JOINT VENTURE



JURY CITATION

The UQ Advanced Engineering Building has a highly complex program, yet its skilful internal planning and well-resolved circulation achieve a great sense of order, openness and transparency. In both plan and section, three volumes feed off a central “street.” Processes, laboratories and equipment are made visible to students, staff and visitors alike. The central street runs the length of the building, with research facilities, teaching and learning spaces, laboratories, workshops, offices and support facilities positioned around it. The large foyer at one end of the building is used to showcase engineering products, stimulating interest in manufacturing processes and the use of advanced materials. At the other end, the plan terminates in a spectacular 500-seat auditorium, with glazed walls looking out towards the Brisbane River. The auditorium roof is supported by a series of exposed timber roof trusses, the radiating geometry of which generates a folded roof form that is expressed inside and out.

The interior has a restrained yet rich material palette, which is derived from the sensitive use of local Queensland timbers – central to the project’s sustainability initiatives. The use of local timber also connects the interior to the outside spaces, providing a clear sense of orientation within the building. Although the building is large,

it is never overwhelming – the clear expression of the structure adds a directness and simplicity to the spaces within. Although it is an institutional building, the material palette has a softness more usually associated with residential architecture, such as the terracotta external screening and the abundance of timber cladding. The same thoughtfulness extends to furniture and fittings, many of which have been purpose-designed for the project.

Clear planning, flexible spaces and laboratories that allow for innovative teaching contribute to the success of this project. The whole building and its interiors are beautifully resolved and are a delight to experience and to occupy.

UQ ADVANCED ENGINEERING BUILDING WAS REVIEWED BY HAIG BECK AND JACKIE COOPER IN ARCHITECTURE AUSTRALIA JAN/FEB 2014. SEE ARCHITECTUREAU.COM/ARTICLES/ADVANCED-ENGINEERING-BUILDING

ARCHITECT Richard Kirk Architect Hassell Joint Venture / project team: Peter Hastings, Yee Jien (project architects); Richard Kirk, Mark Loughnan (design architects); Paul Chang, Andrew Drummond, Fedor Medek, Jonathon Ward, Stephen Chandler, Adam Laming, Mitch Reed, Erik Szraki, Mark Roehrs, Mark Craig, Daniel Loo, Troy King, BP Loh, Nguyen Lun, Mac Young, Catherine Van Der Heide STRUCTURAL, CIVIL, ELECTRICAL, LIGHTING AND COMMUNICATIONS CONSULTANT Aurecom MECHANICAL, HYDRAULIC AND SERVICES CONSULTANT WSP Group LANDSCAPE CONSULTANT Hassell INTERIOR DESIGN Richard Kirk Architect and Hassell ACOUSTIC CONSULTANT Arup COST CONSULTANT Rider Levett Bucknall PROGRAMMING CONSULTANT RTM BUILDER Watpac PROJECT MANAGER Peter Sampson, University of Queensland PHOTOGRAPHY Peter Bennetts



UQ ADVANCED ENGINEERING BUILDING

RICHARD KIRK ARCHITECT HASSELL JOINT VENTURE



JURY CITATION

Part of the brief from the University of Queensland was that this building should establish a new benchmark in sustainable design. The result, which has received a 5 Star Green Star rating and which has innovative sustainability features throughout, is a significant achievement, with the potential for broad application throughout the tertiary sector and the community beyond.

The building, which houses the School of Civil Engineering and the Queensland Centre for Advanced Materials Processing and Manufacturing, is set within the subtropical climate of the University of Queensland's St Lucia campus. Brisbane has one of the world's most benign climates: seven out of ten days are at a comfortable temperature, meaning the building can largely be naturally ventilated. Several fine-grain modes of climate control or blended systems are used as a backup for times when ambient temperatures go above or below the comfort range. A large thermal labyrinth beneath the building is used to temper air supply to the HVAC system – helping to reduce the load on the system. Modelling demonstrates total carbon production at thirty kilograms per square metre of gross floor area per annum.

The building incorporates Glulam timber for the structure and facade, all produced and manufactured in Queensland, demonstrating the appropriateness of this technology as an alternative to steel and aluminium. The project leads the way in making extensive use of locally sourced renewable resources, local industry and local manufacturing.

This project demonstrates the potential for innovation to achieve outcomes beyond established targets and to promote inherently sustainable local industries. The jury was thoroughly impressed by the building, which not only sets a new benchmark in sustainability, but is also a delight to experience.

UQ ADVANCED ENGINEERING BUILDING WAS REVIEWED BY HAIG BECK AND JACKIE COOPER IN ARCHITECTURE AUSTRALIA JAN/FEB 2014. SEE ARCHITECTUREAU.COM/ARTICLES/ADVANCED-ENGINEERING-BUILDING

ARCHITECT Richard Kirk Architect Hassell Joint Venture / project team: Peter Hastings, Yee Jien (project architects); Richard Kirk, Mark Loughnan (design architects); Paul Chang, Andrew Drummond, Fedor Medek, Jonathon Ward, Stephen Chandler, Adam Laming, Mitch Reed, Erik Sziraki, Mark Roehrs, Mark Craig, Daniel Loo, Troy King, BP Loh, Nguyen Luu, Mac Young, Catherine Van Der Heide **STRUCTURAL, CIVIL, ELECTRICAL, LIGHTING AND COMMUNICATIONS CONSULTANT** Aurecon **MECHANICAL, HYDRAULIC AND SERVICES CONSULTANT** WSP Group **LANDSCAPE CONSULTANT** Hassell **INTERIOR DESIGN** Richard Kirk Architect and Hassell **ACOUSTIC CONSULTANT** Arup **COST CONSULTANT** Rider Levett Bucknall **PROGRAMMING CONSULTANT** RTM **BUILDER** Watpac **PROJECT MANAGER** Peter Sampson, University of Queensland **PHOTOGRAPHY** Peter Bennetts