

Are you a Homeowner wanting inspirational ideas to create your dream home?

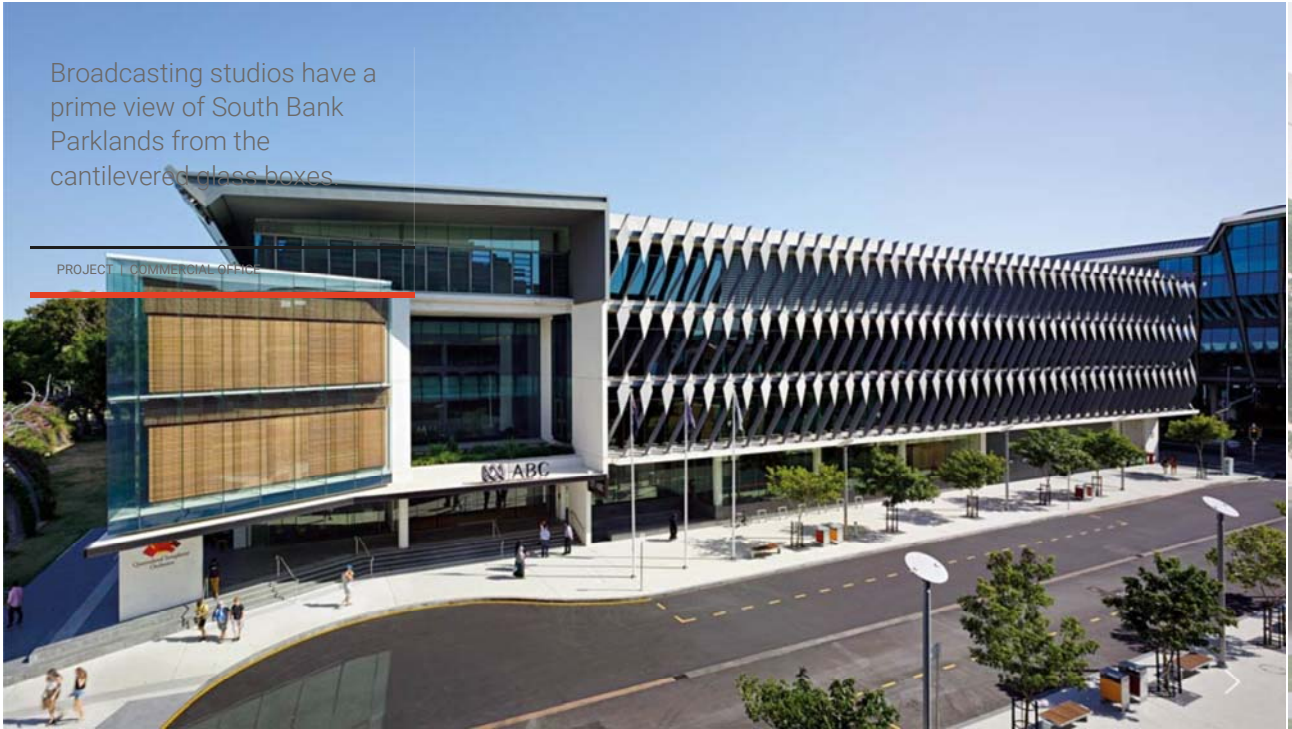
VISIT COLORBOND.COM



- Showcase
- Products
- Profiles
- Library
- Network
- Tools
- Support

Search

Everything



ABC Brisbane Accommodation Project

Image Gallery

Related Products

Related Firms

ABC Brisbane Accommodation Project

With distinctive steel cladding that dances its way along the building's northern and western facades, it appears that 'Aunty' is young once again.

Commercial Office | 7/11/2013

Credentials

Location: South Brisbane, Queensland
Client: Australian Broadcasting Corporation (ABC)
Architect: Richard Kirk Architect
Project Team: Richard Kirk, Karl Eckermann, Paul Chang, Jonathon Ward, Matthew Mahoney, Sam Clegg, Fedor Medek, Grace Egstorf, Justine Drummond, Glen Millar, Joe Adsett, Tess Martin, Shane Willmet, Tian Li, Richard Nicholls, Brendan Pointon, Wes Kelder
Builder: Leighton
Steel Fabricator and Cladding Contractor: ACLAD
ESD Consultant: Cundall
Shop Drawing Contractor: Eaton Industrial Imaging
Structural & Civil Engineer: Cardno
Building Certifier: Certis Group
Hydraulic & Mechanical engineer: WSP Group
Landscape Architects: Gamble McKinnon Green
Project timeframe: 2009-2012
Awards: Australian Institute of Architects Brisbane Regional Commendation for Commercial Architecture
Building Size: 15,000m² GFA
Total Project Cost: \$70 million
Words: Margie Fraser
Photography: Paul Bradshaw; Christopher Frederick Jones

The cladding on the new Australian Broadcasting Commission building in Brisbane's South Bank is part of the language of layered shading that is common parlance in tropical architecture, and which architect Richard Kirk's practice embraces in projects in Australia, Malaysia and Singapore.

Deeply carved reveals, open atriums, generous overhangs and a series of operable skins salute the simplicity and pragmatism of a design ethos that viscerally responds to the environment. "Our buildings are about the climate," says Kirk.

The four-storey ABC building sits on a pivotal corner site at the intersection of the playground that is South Bank and the city's cultural precinct.

The chiseled-out entry foyer is a pivot between two street addresses. The different treatments of the external facades emphasise the two addresses and functions. "The fabric of the building is conceived in two parts," says Kirk. "The blades are the urban side, and the transparent glazing faces the Parklands."

The distinctive steel cladding that dances its way along the northern and western facades of the building is part of the language of layered shading that is common parlance in tropical architecture.

The three tiers of east-facing office space are visible from the Parklands through floor-to-ceiling glass. A cantilevered corner projects beyond the rigid rectangle of the building and houses two levels of broadcasting studios. The prow-like projection makes these spaces a voyeur's delight, enjoying a transparency uncommon to the genre. A layer of adjustable aluminium blinds that automatically track the sun drapes over the triangulated glazing, and continues along the southern elevation.


1 2 3

Image Gallery

Your System Status

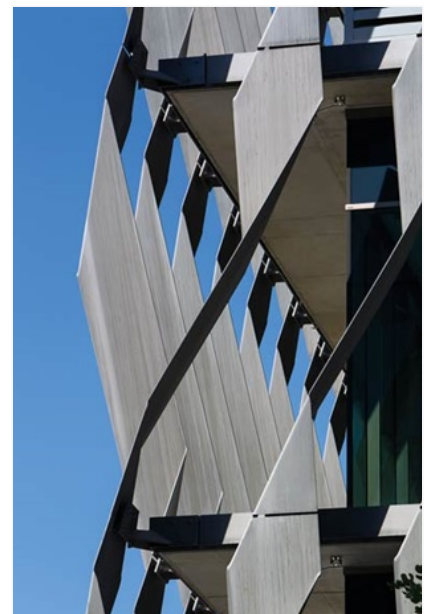
WE'RE SORRY!

You need to update your Flash Player.



IMPORTANT: After installing the required upgrade please reload this browser window to view the video player.

ABC Brisbane Accommodation Project





A striking pattern of steel blades give the new ABC Brisbane Accommodation building its striking exterior identity.



Light penetrates the floors through floor-to-ceiling glazing.

Blades made from 10mm high-tensile grade 350 BlueScope steel plate deflect sound and double as sunscreens.



The ABC occupies a pivotal position near the Queensland Performing Arts Complex.



A stairwell void acts as a highly visible circulation route between floors and activates the entry foyer.



Broadcasting studios have a prime view of South Bank Parklands from the cantilevered glass boxes.



A layer of aluminium operable screens filters light for the interiors and multiple workstations.



The MPS hosts full orchestral recitals and sound-'dead' television recordings.



Steel blades ripple across the ABC building's northern and western facades.



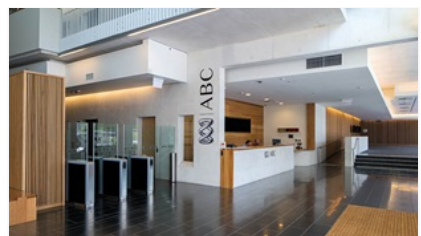
Blades made from 10mm high-tensile grade 350 BlueScope steel plate deflect sound and double as sunscreens.



Broadcasting in action, from the glass box visible to passersby.

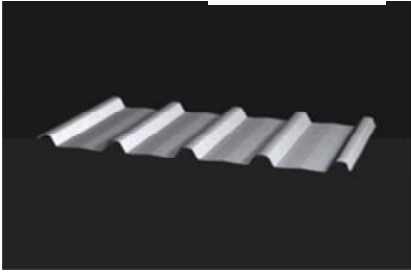


Occupants enjoy a prime view of the Arbour Walk, which winds through the Southbank Parklands and features overlapping 'trees' fabricated from XLERPLATE® steel.



Entry foyer and reception, with access to the Multi Purpose Studio located rear left.

Related Products



LYSAGHT TRIMDEK®

Building & Construction Products | Roofing



STRUCTURAL PRODUCTS

A range of steel plate grades for use in structural applications.

Uncoated Steel | XLERPLATE® steel



ROOFING MADE FROM COLORBOND® STEEL

Coated Steel | COLORBOND® steel

Related Firms



LEIGHTON CONTRACTORS

Phone: 03 9228 7700
 Address: Level 1, 5 Queens Rd, Melbourne VIC 3000
 Website: www.leightoncontractors.com.au

Network



RICHARD KIRK ARCHITECTS

Phone: 07 3255 2526
 Email: mail@richardkirkarchitect.com
 Address: 13 Manning St, South Brisbane QLD 4101
 Website: www.richardkirkarchitect.com

Network

About BlueScope

- Sustainability
- Compliance
- Warranty
- News

Corporate website
bluescope.com

For consumers
colorbond.com

Coated Steel

- COLORBOND® steel
- ZINCALUME® steel
- GALVASPAN® steel
- DECKFORM® steel
- TRUCORE® steel
- GALVABOND® steel
- ZINC HI-TEN® steel
- ZINCANNEAL® steel
- ZINCFORM® steel
- Other Pre-painted

Uncoated Steel

- XLERPLATE® steel
- TRU-SPEC® steel
- EMBAR™ steel
- Cold Rolled Coil
- Hot Rolled Coil

Building & Construction Products

- Roofing
- Walling
- Structural Products
- Composite Steel
- Formwork
- Guttering
- Framing
- Flooring Systems
- Fire rated wall systems
- Coolroom Storage
- Fencing
- Roofing Accessories
- Rainwater Storage
- Structural Cladding
- Vents

Support

- Technical & Product support
- SteelDirect **1800 800 789**
- Email enquiry
- Feedback on the website