



- [Projects](#)
- [Profiles](#)
- [Submit](#)

2408 projects, 660 profiles, 30792 images

Sir Llew Edwards Building at University of Queensland

[Brisbane Unique Homes](#) brisbaneuniquehomes.com.au
30+ Years Building Quality Homes. Free In-House Design 0412268855

[Patios & Extensions](#) www.trueline.net.au
Home Improvement Ideas- Pergolas, Patios, Add-a-Room, Opening Roofs +

[Craig Steere Architects](#) www.craigsteerearchitects.com.au
Award Winning Architects, Perth Residential and Boutique Commercial

[Granny Flat Style Homes](#) bellmarch-integratedlivinghome
Integrated Living Design by Bellmarch - Sydney & Central Coast

AdChoices 

Share

[Email](#) / [Facebook](#) / [Twitter](#)

At a glance

- **Project by:** Richard Kirk Architect
- **Location:** St. Lucia, Brisbane, Australia
- **Program:** Educational building

Preview image



© Aperture Architectural Photography

Project images



South entry
© Aperture Architectural Photography
[View project image](#)



View from east
© Aperture Architectural Photography
[View project image](#)



The court yard
© Aperture Architectural Photography
[View project image](#)



South wing façade
© Aperture Architectural Photography
[View project image](#)



The court yard
© Aperture Architectural Photography
[View project image](#)



View from court yard to the roof
© Aperture Architectural Photography
[View project image](#)



Interior
© Aperture Architectural Photography
[View project image](#)



Interior, first floor
© Aperture Architectural Photography
[View project image](#)



View from third floor to court yard
© Patrick Bingham Hall
[View project image](#)



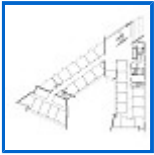
Interior, stair to second floor
© Patrick Bingham Hall
[View project image](#)



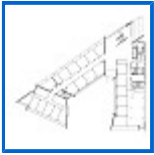
Level 1 floor plan
© Richard Kirk Architect
[View project image](#)



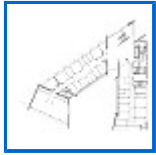
Level 2 floor plan
© Richard Kirk Architect
[View project image](#)



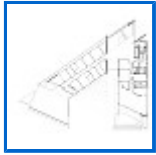
Level 3 floor plan
© Richard Kirk Architect
[View project image](#)



Level 4 floor plan
© Richard Kirk Architect
[View project image](#)



Level 5 floor plan
© Richard Kirk Architect
[View project image](#)



Level 6 floor plan
© Richard Kirk Architect
[View project image](#)



Roof plan
© Richard Kirk Architect
[View project image](#)

Architect's statement

General Purpose North Building 4.

The six level building contains a wide range of teaching spaces including: seminar rooms, staff offices, student resource areas, a 250 square metre auditorium and a function room opening out onto landscaped roof terraces. The lower two floors include specialist training spaces where both the design of the spaces (layouts, fixed furniture etc.) and the integration of advanced AV equipment enable the university to utilize for the first time, new advances in teaming methodology.

The building is located overlooking the main forecourt of the University and figure prominently in the redevelopment of this important area for the University. It is the first building to be constructed in this prestigious location in 30 years. The project design responds to the site by addressing its largely landscaped setting and the surrounding buildings. The building's success is in the manner in which it engages with the existing campus master plan and the way in which it provides the University with a new building typology that exemplifies significant advances in the inclusion of ESD features.

Uniquely for a building on the campus, GPN4 presents a five storey high glazed screen on its main public façade which not only enable the University to display its operations more overtly, but also enable occupants of the five storey high internal atrium space that is behind the glazed screen to enjoy long distance views to West End and the mountain ranges beyond.

The building adopt best practice ESD principles (natural day lighting, rain water re-use, monitoring etc).

Richard Kirk Architect in association with ML Design were the successful architects in the short listed design competition for the General Purpose North Building 4.

Awards:

- 2009 AIA FEG Stanley Awards for Public Architecture
- 2009 AIA Regional Commendation

Details/Credits

- **Project name:** Sir Llew Edwards Building at University of Queensland
- **Location:** St. Lucia, Brisbane, Australia
- **Program:** Educational building
- **Area:** Site Area: 5,135 m2 • Built-up Area: 10,500 m2
- **Year:** Completion: 2008
- **More details:** Cost of Construction: AUD 44,600,000
- **Client:** University of Queensland
- **Project by:** Richard Kirk Architect
- **Team:** Principal Designer: Richard Kirk • Design Team: Glen Millar, Brendan Pointon, Andrew Drummond, Feder Medek, Mark Spence, Mark Kennedy, Chloe Comino, Evan Atkinson, Robert Keen, Nanette Saunders
- **Others:** Contractor: Watpac
- **Text:** Courtesy of Richard Kirk Architect
- **Images:** Courtesy of Richard Kirk Architect

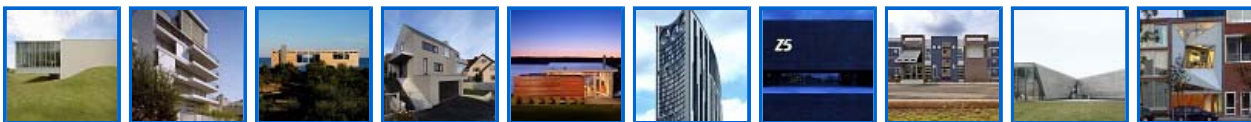
Related links

- [Editor's picks](#)
- [Educational Architecture](#)
- [Architecture projects from Australia](#)
- [Richard Kirk Architect website](#)
- [Richard Kirk Architect](#)

Navigate

[<Newer](#) | [Older>](#)

Get Updates



[Editor's Picks](#)

[Sitemap](#) | [Contact](#)