

Rosalie Residence / Richard Kirk Architect

01:00 - 12 June, 2012

 [Share in Whatsapp](#)



Architects

[Richard Kirk Architect](#)

Location

Brisbane, Queensland, [Australia](#)

Structural & Civil Engineers

NJA Consulting

Electrical Engineer

Ken Gallienne & Associates

Mechanical Engineer

Ralph Engineering Concepts

Hydraulic Engineer

Cushway Blackford

Project Year

2010

Photographs

[Scott Burrows](#)



Log in | Sign up



From the architect. Queensland, Australia Rosalie House by Richard Kirk Architect (RKA) is located in one of [Brisbane](#)'s most established inner city suburbs. This 5-bedroom family home sits on a hillside among the peaks and gullies that characterises the suburb of Paddington.



Rosalie House has a solid base that rises up as a 3-storey lightweight structure. The exterior is predominantly recycled Tallow wood weatherboard and pre-weathered zinc cladding – RKA's interpretation of the timber and tin tradition that is prevalent in the area.



Sun-shading and privacy is achieved with operable timber screens and external venetian blinds that sit in front of a bespoke timber window joinery. The planning of the house is organised to address the views towards the city on the North-East and Mt Coot-tha on the South-West. The resulting building footprint provides private courtyards and landscaped terraces adjacent to the main living spaces.



The interior is an ensemble of Red Mahogany timber flooring and Jarrah timber panelling on backdrop of white plaster walls and white-set ceilings. Environmental features of the house include solar hot water, 40,000L in-ground rainwater storage for landscape irrigation and low energy lighting.



Log in | Sign up





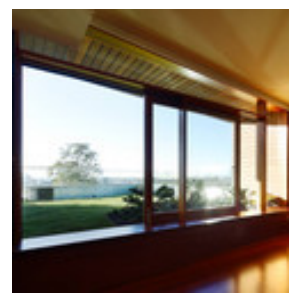
© Scott Burrows



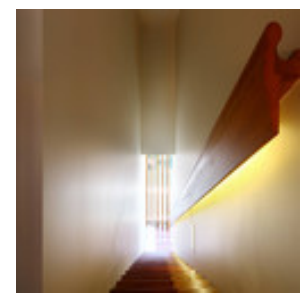
© Scott Burrows



© Scott Burrows



© Scott Burrows



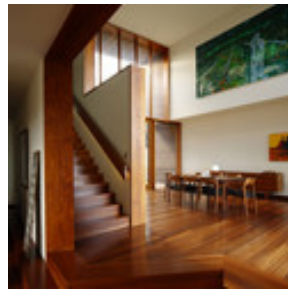
© Scott Burrows



© Scott Burrows



© Scott Burrows



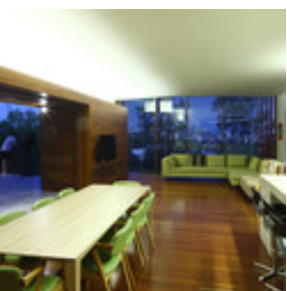
© Scott Burrows



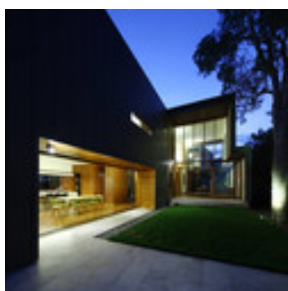
© Scott Burrows



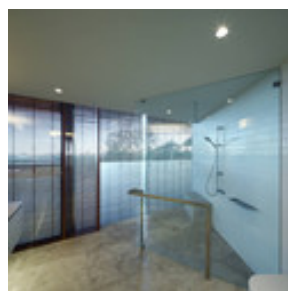
© Scott Burrows



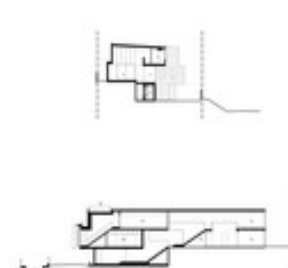
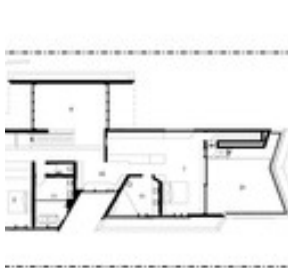
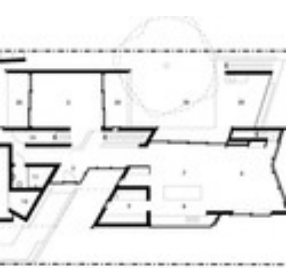
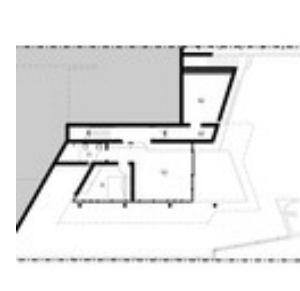
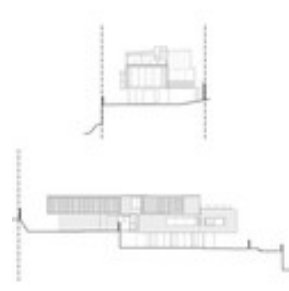
© Scott Burrows



© Scott Burrows



© Scott Burrows



 [Share in Whatsapp](#)

Products:

[Wood](#)

[Concrete](#)

See more:

[Projects](#)

[Built Projects](#)

[Selected Projects](#)

[Houses](#)

[Brisbane](#)

[Houses](#)

[Australia](#)

Cite: "Rosalie Residence / Richard Kirk Architect" 12 Jun 2012. ArchDaily. Accessed 19 Apr 2017. <<http://www.archdaily.com/243022/rosalie-residence-richard-kirk-architect/>>

[BROWSE THE CATALOG](#)



[Log in](#) | [Sign up](#)

