

Elysium / Richard Kirk Architect

01:00 - 19 April, 2012

 [Share in Whatsapp](#)



Architects

[Richard Kirk Architect](#)

Location

Noosa, Sunshine Coast, Queensland, [Australia](#)

Structural Engineer

Bornhorst & Ward

Hydraulic Engineer

Cooper & Associates

Project Year

2008

Photographs

[Scott Burrows](#)

From the architect. Richard Kirk Architect was one of several architects invited in 2005 to participate in the Elysium development which is an ambitious 189 lot boutique housing sub-division on a site to the west of the centre of Noosa on the Sunshine Coast. Elysium initially adopted architecture as the key driver for the amenity and quality of the environment for the entire development.



[Log in](#) | [Sign up](#)



Lot 176 is the first of the series and is in effect a prototype using the same materials, construction, and spatial ideas as a shared palette. The residence on Lot 176 is located on a ridge along the west of the Elysium development with views to the rear into extant landscape and a golf course beyond. The residence occupies the majority of the allowable building envelope and then provides a carved out two story volume in the centre to allow light and ventilation to all interior spaces.

The carved interior volume provides an internal focus visually and functionally. The inside and outside are united by seamless transitions and the consistent use of a restrained palette of materials. Materials are generally timbers left to weather naturally, zinc, and self-finished oxide renders which will improve their appearance with time, allowing the houses to merge with the landscape with an overall desire for applied finishes to be kept to a minimum.

The organisational strategy was delivered by the topography which allowed the garaging of cars to occur below grade with the living spaces on the ground and sleeping spaces placed above. The removal of the garage spaces from the main living level allowed the main living spaces to link visually and physical along the long axis of the rectangular site and allowed the living spaces to be treated as a field of connected spaces and rooms whilst the bedrooms on the next level are conceived as nests floating above.

The building is largely opened on the short access to allow views out of site with the living level utilising sliding screens to opening the interior completely to the exterior. The long axis walls are largely solid and openings are finely screened with vertical timber to blend with the vertical cedar cladding to give the sense of taught solid volume folding over the long sides.

On the short axis to the bedroom level the openings are finely screened with horizontal timber members which from within allow exterior views whilst presenting a solid volume albeit with a subtle change in texture. The careful screening allows the opening of the building without compromising security or privacy from the adjacent dwellings.



Log in | Sign up





© Scott Burrows



© Scott Burrows



© Scott Burrows



© Scott Burrows



© Scott Burrows



© Scott Burrows



© Scott Burrows



© Scott Burrows



© Scott Burrows



© Scott Burrows



© Scott Burrows



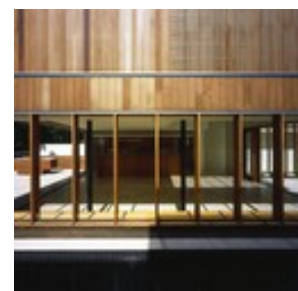
© Scott Burrows



© Scott Burrows



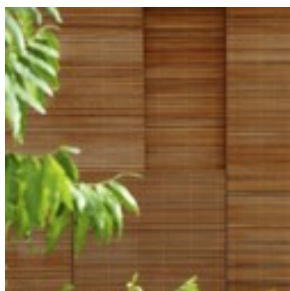
© Scott Burrows



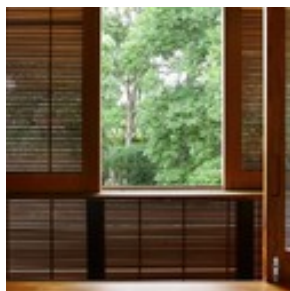
© Scott Burrows



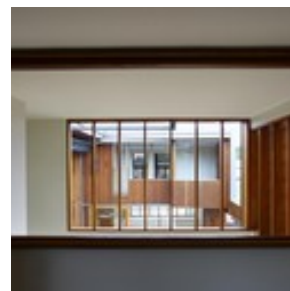
© Scott Burrows



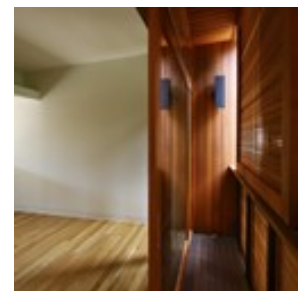
© Scott Burrows



© Scott Burrows



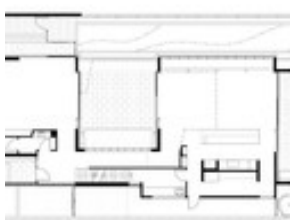
© Scott Burrows



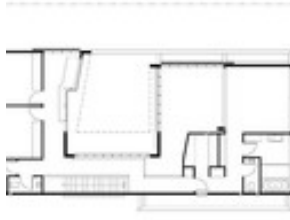
© Scott Burrows



© Scott Burrows



plan 01



plan 02

 [Share in Whatsapp](#)



 [Log in](#) | [Sign up](#)



Product:

Concrete

See more:

Projects

Built Projects

Selected Projects

Houses

Houses

Australia

Cite: "Elysium / Richard Kirk Architect" 19 Apr 2012. ArchDaily. Accessed 19 Apr 2017. <<http://www.archdaily.com/227564/elysium-richard-kirk-architect/>>

BROWSE THE CATALOG



Modular Skylights - Northlight 40-90°

VELUX



Hexapent Facade Panel

ULMA Architectural Solutions



Log in | Sign up

