

INDOOR/OUTDOOR ROOM Jemma, the family's 17-year-old Burmese cat, presides over the outdoor entertaining space on a vintage ottoman. Walls are in western red cedar, ceiling in hemlock timber and flooring in creamy travertine. Sofas from Dedon. Cushions and ottoman from Kova Lifestyle.

Smart buy: Cappucino Travertine floor tiles, from \$55/m², Homestone. For Where to Buy, see page 190.

ARBOUR VIEW

On a very special site beside the Brisbane River, this warm family home carries on a proud Queensland tradition.

STORY & STYLING KATE NIXON | PHOTOGRAPHY MAREE HOMER



This is the life

With a long-term mission to see the children from toddlers to teens and beyond, this house offers separate zones for parents and children, connected through communal living areas that frame the views. The open-plan dining space connects to the outdoors via huge stacking glass windows, so one table can be used for both indoor and outdoor dining. It's the perfect entertainer.



LIVING ROOM The gleaming floorboards are recycled blackbutt timber, softened with a textured rug.

For similar rug and coffee table, try Freedom. Patchwork cushion from Kova Lifestyle. Flowers throughout from Phoebe Stephens Flowers. Landscaping by Garden Etiquette.

Smart buy: Delta II chair in Viva leather, \$1553, King Furniture.

KITCHEN Custom joinery in American oak veneer is teamed with stainless steel and a splashback window in white laminated glass. Similar stools from Stylecraft. Saeco coffee machine. **For Where to Buy, see page 190.**

Situated between a protected harbour of century-old Moreton Bay fig trees, the historic Amity House and a magnificent, heritage-listed poinciana tree on the Brisbane River, this home stands on what architect Richard Kirk describes as “a pretty magical site”.

“This is a unique site as far as the city goes, with amazing natural and historical aspects,” he says. “We strove for that authenticity and originality in building this house.”

Briefed in 2005 to create a house for a couple with a baby (now the eldest of three siblings aged six, five and three), Richard considered how the home would be used as the children grew up. “In 10 or 15 years the

dynamics of a family change significantly, so we designed a relatively large house with a number of living spaces,” he says. “At the same time, the home would be subtle and demure, not ostentatious in any way.”

Once part of the CSR sugar refinery, the site came with few restrictions, giving the owners freedom to build out to the boundary and up to a generous height. “We were able to focus on maximising the usable internal space,” says Richard. A central courtyard became the core of the plan and splits the layout in two, with children’s spaces to the west and the parents’ and entertaining zones facing the river.

Entry to the home is via a private courtyard. This privacy buffer meant that the windows in the >

'The house opens up like a funnel towards the river and you get those long views all the way through.'

RICHARD KIRK, ARCHITECT

Smart storage

Family-minded storage solutions in this home keep everyday necessities close at hand and infrequently needed items out of sight. Just off the entry space, a credenza incorporates large pull-out drawers for stowing children's schoolbags and other pieces. The lower ground level has multiple storage rooms for bulkier items such as suitcases and sporting equipment.



Colour palette



Dulux China White
(walls throughout)

Add a dash of...



Porter's Paints Blue Cow



Wattyl Irresistible



Bristol Dustin

Accents with a touch of warmth harmonise with the richness of timber.

BEDROOM American oak joinery incorporates storage and the panels above the bed open to reveal a view down the void to the living areas. Bed from Koskela. Cushions and quilt from Kova Lifestyle.

Smart buy: Marimekko Hektia Moments fabric art panel, \$459, Sivad Designs.

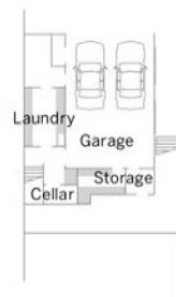
ENSUITE A strategic cut-out in the wall allows prime views from the bathroom. Laufen Palomba basin and Hansa Vantis mixer from Bretts Architectural. Noce travertine tiles from Homestone.

For Where to Buy, see page 190.





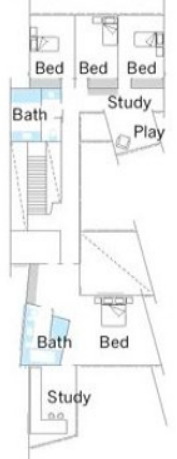
LOWER GROUND FLOOR



FIRST FLOOR



SECOND FLOOR



Printed and reproduced as accurately as possible. All rights reserved. No part of this publication may be reproduced, stored in a retrieval system, or transmitted, in any form or by any means, without the prior written permission of the publisher.



BEDROOM The children's bedrooms were designed as individual nests, perched under the roof at the level of the tree canopy. Blanket and cushions from Kova Lifestyle.

STUDY The business end of the parents' retreat offers more outstanding views. The decades-old poinciana is framed by windows in New Guinea rosewood.

Designer buy: Mademoiselle chairs in Missoni fabrics, from \$1140/each, Kartell. For Where to Buy, see page 190.

< children's rooms could be generous, affording views to the fig arbour. A walkway leads through a double-height void into the central courtyard. To the right are a guest bedroom, bathroom and play area; to the left, the open-plan kitchen, living and dining spaces. A protected outdoor entertaining space off the social zones frames the magnificent views beyond

On the first floor are the three children's bedrooms, along with their shared bathroom, playroom and study. Their parents' retreat – bedroom, ensuite and study – is connected via a walkway. The lower ground level has a garage and laundry, plus a cellar and other storage spaces that could easily be converted into a teenage retreat in the future.

Richard has used a rich palette of solid timbers and veneers, including spotted gum, western red cedar and American oak. "We have a strong timber tradition in Queensland and I think it's appropriate to work with these materials for their long-term durability," he says. Each has a characteristic weathering pattern, and they're designed to blend together as they age.

For Richard, the most successful aspect of the design is the way the river and trees still have a strong presence on the site. "The role of the house becomes more sheltering rather than an object in itself," he says, "and that is something we were striving for."

H&G
Richard Kirk Architect, South Brisbane, Queensland;
(07) 3255 2526 or www.richardkirkarchitect.com.

‘The children can use one part of the house and the adults another, but they still stay connected.’ RICHARD

