

Arbor House

New Farm, Brisbane, Australia

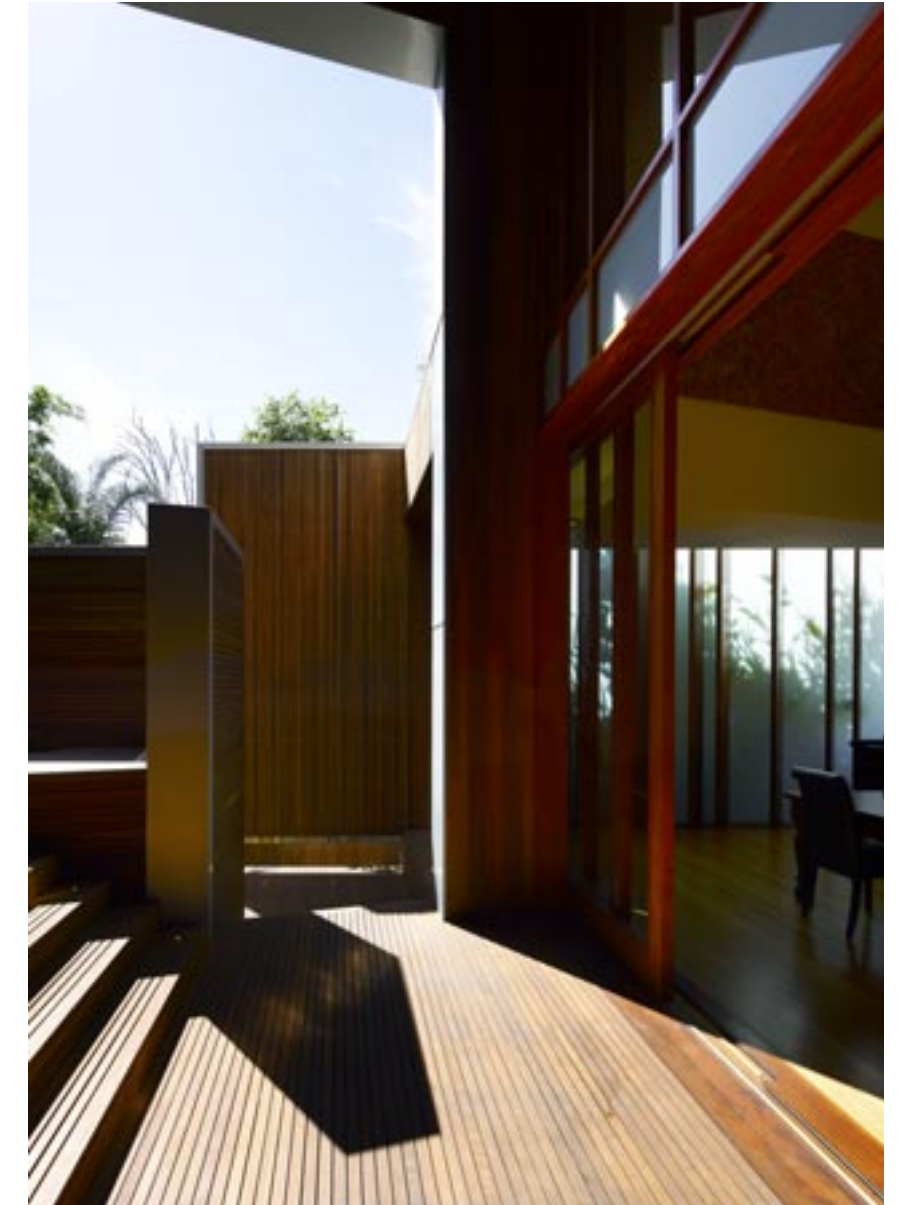
Richard Kirk Architect

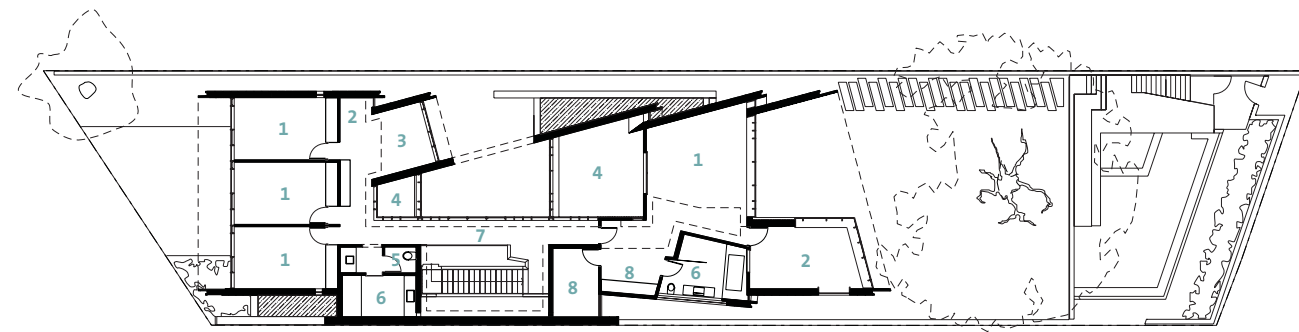
Photography: Scott Burrows, Aperture

Arbor House, located on the Bulimba Reach of the Brisbane River, is a study in siting and intricate articulation to yield views and landscape connections.

The long, thin 13-metre-wide site is located between two key public spaces—an established historic arbor of fig trees and a public riverfront boardwalk. The site, which once formed part of the surrounding multi-residential enclave, is now distinguished by a new single detached dwelling. Unlike other riverfront houses, the new dwelling is sited a respectful distance from the river's edge, preserving an 80-year-old Poincianna tree and historic public views from the boardwalk of the adjoining heritage-listed dwelling.

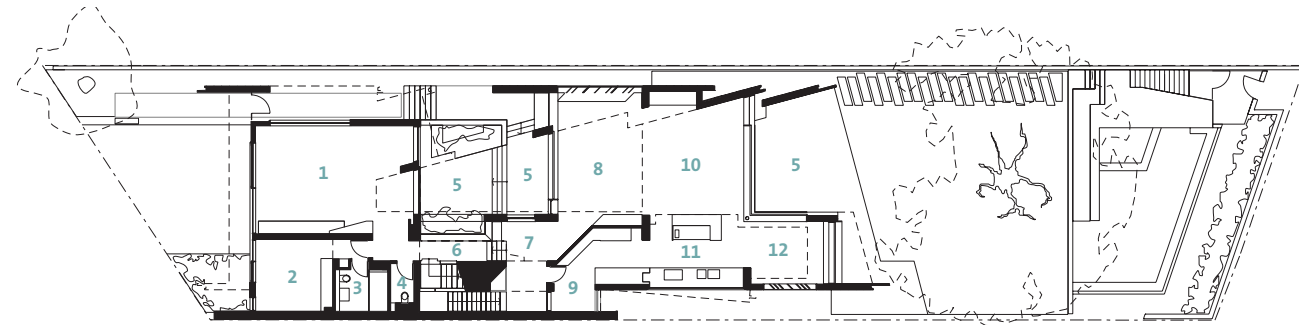
The large setback creates a platform for a private garden under the shade of the canopy of the Poincianna tree. The level of the platform and the height of the Poincianna tree and the arbor established the two datums for the setout of public and private spaces of the dwelling. The public riverfront living levels are adjacent to this space whilst the rear living spaces are elevated above the garage to look into the canopy of the arbor. The private bedroom spaces of the upper level are raised to a height to afford views of the tree canopy and river, yet offering privacy from the public river boardwalk.





First floor

- 1 Bedroom
- 2 Study
- 3 Play area
- 4 Void
- 5 Powder room
- 6 Bathroom
- 7 Bridge
- 8 Robe



Ground floor

- 1 Family room
- 2 Bedroom
- 3 Bathroom
- 4 Powder room
- 5 Terrace
- 6 Hall
- 7 Entry
- 8 Dining room
- 9 Study
- 10 Living room
- 11 Kitchen
- 12 Meals area



Basement

- 1 Garage
- 2 Drying court
- 3 Laundry
- 4 Hall
- 5 Store room
- 6 Cellar

