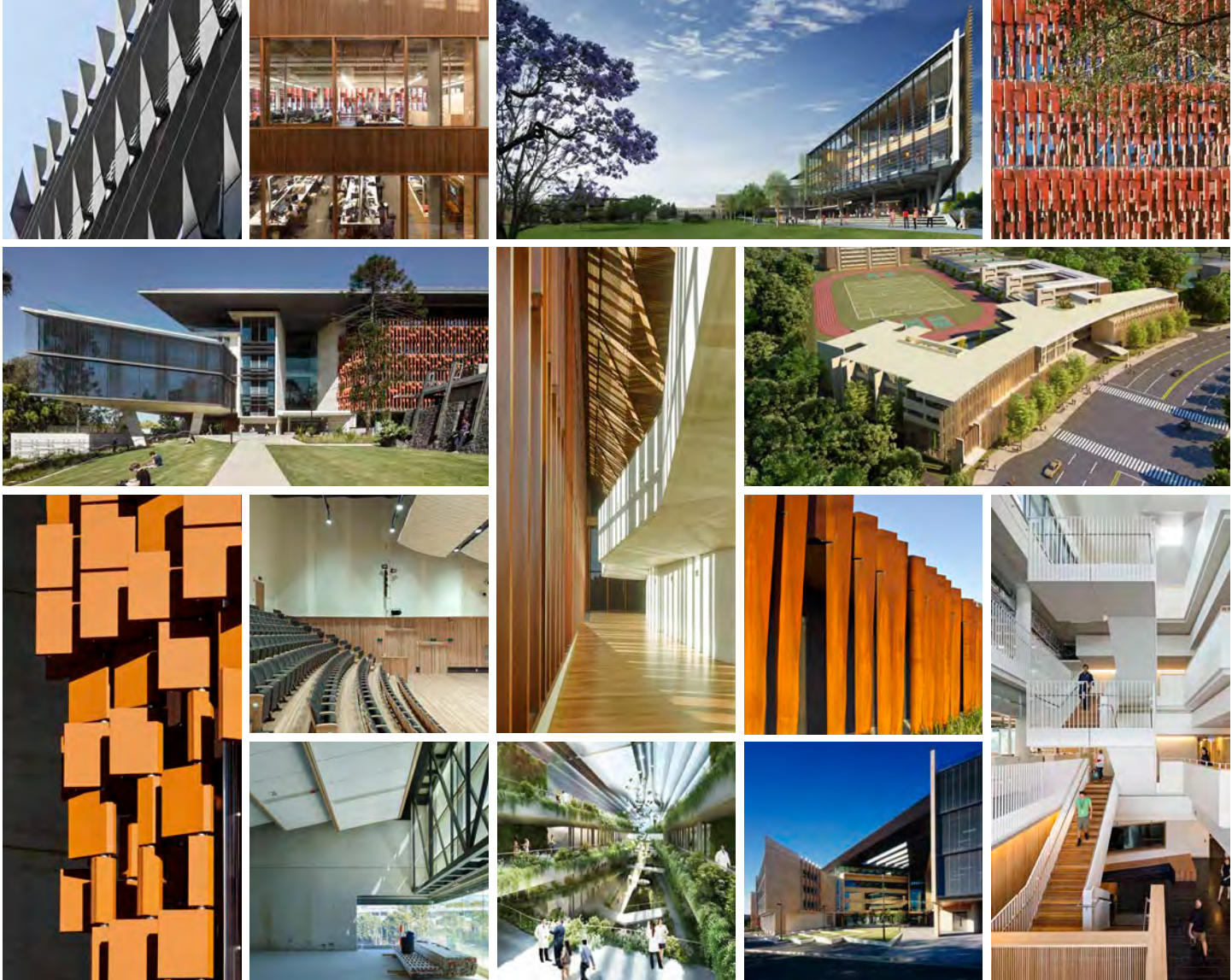


kirk



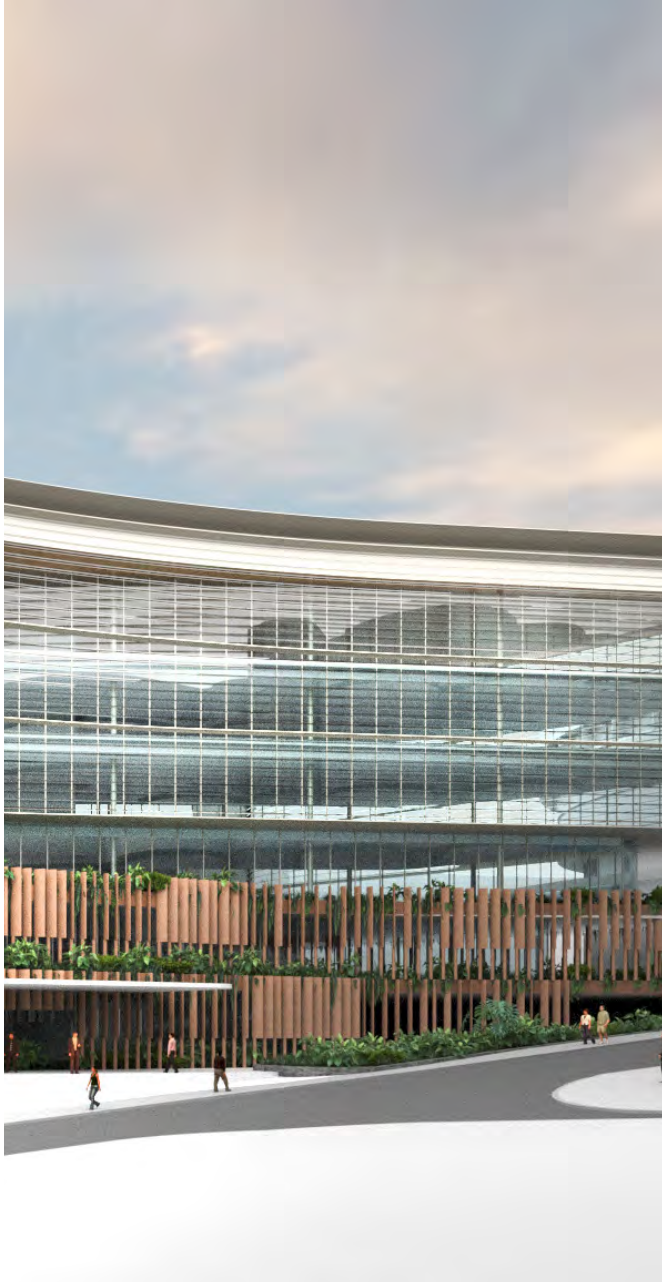




kirk



ADVANCED ENGINEERING BUILDING, UNIVERSITY OF QUEENSLAND, AUSTRALIA



KIRK

Multiple studios using small, project focused teams.

A collaborative practice that supports, creates and explores.

Committed to making authentic buildings and places.

Advocating, advancing & delivering sustainable design solutions.



NTU ACADEMIC BUILDING SOUTH

SINGAPORE

...Knitting the site with the context...Form reflects the program...A ceremonial and symbolic heart for the campus...Creating a significant and memorable space...Make a permanent, breathable building...Bringing the landscape into the interior...A new benchmark in sustainability...

Our design for the ABS creates a world class and highly relevant education setting that provides a supportive, quality learning environment and enhanced student life opportunities fostering graduates who are resourceful and adaptable leaders, well versed in collaborative team learning.

There are communal gathering zones and activated circulation areas where chance encounters can lead to conversations and new ideas, critical to creating a vibrant sense of place and fulsome life on campus for students, staff and members of the community. The planning responds to the rising awareness that these in-between spaces are significant as non-formal learning places that promote learning beyond curriculum. Plenty of space for comfortable, flexible loose furniture, well-appointed communal hubs and seamless access to high speed Wi-Fi will create the sticky campus spaces that are fundamental to a vibrant and energetic student presence on campus.

Importantly we have endeavoured to make the building address its setting and respond to the very diverse building quality and formal aesthetic that creates its context. We do this by ensuring we create a series of memorable places around and within the building itself. The courtyard in particular is designed as a Great Room – this will be a unique space for students, staff and visitors to the campus to occupy and enjoy.

PROGRAM Research facilities, teaching spaces and office accommodation for Post-graduate and Under-graduate Business programmes. Accommodation for World-class business-related research centres.

CLIENT Nanyang Technical University

AREA 40,000m²

COST TBC

STATUS Proposed





MASTERPLANNING

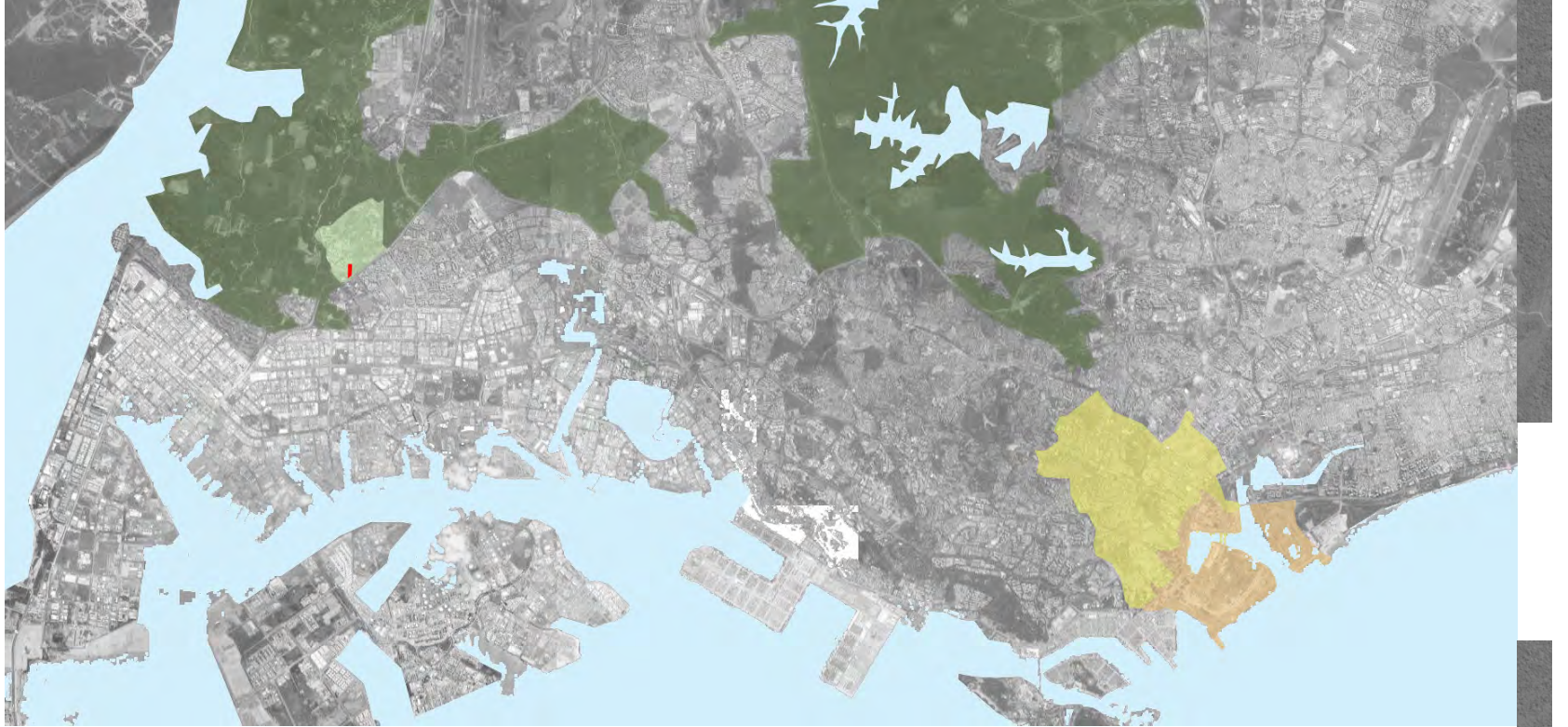
COMMERCIAL

EDUCATION & PUBLIC

CULTURAL

RESIDENTIAL

TRANSPORT & INFRASTRUCTURE



SITE LOCATION



CAMPUS CORE



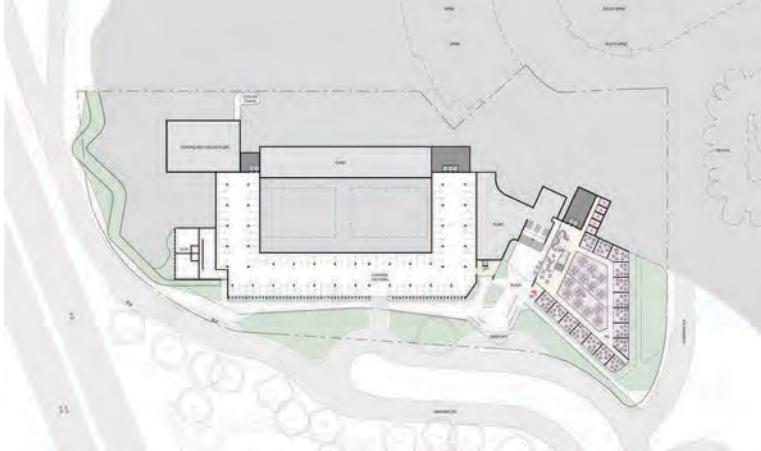
YUNNAN GARDEN



CAMPUS APPROACH



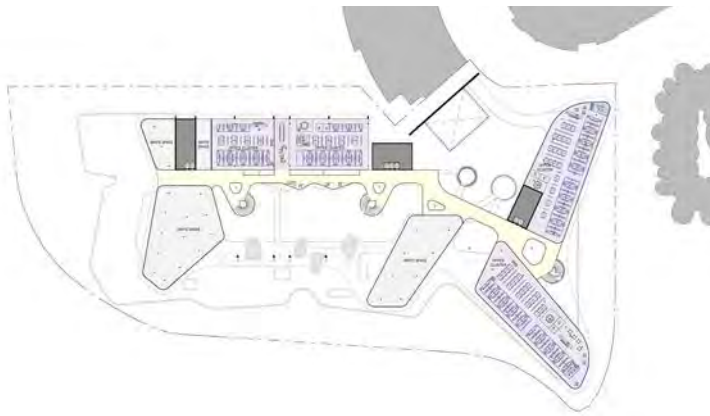
CAMPUS HUBS



BASEMENT



FIRST FLOOR



FOURTH FLOOR



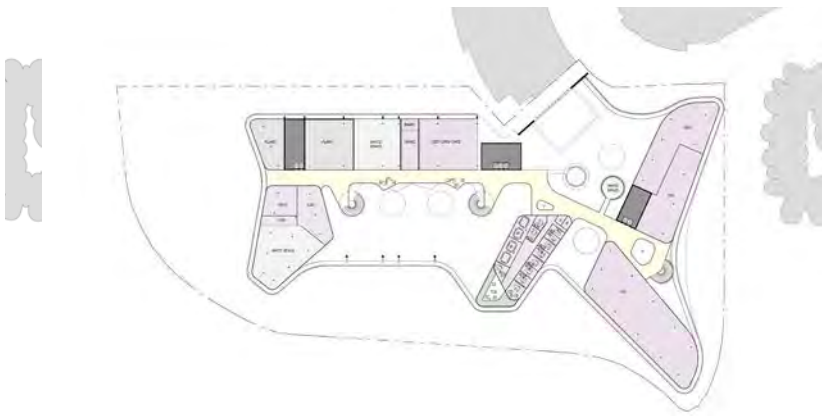
FIFTH FLOOR



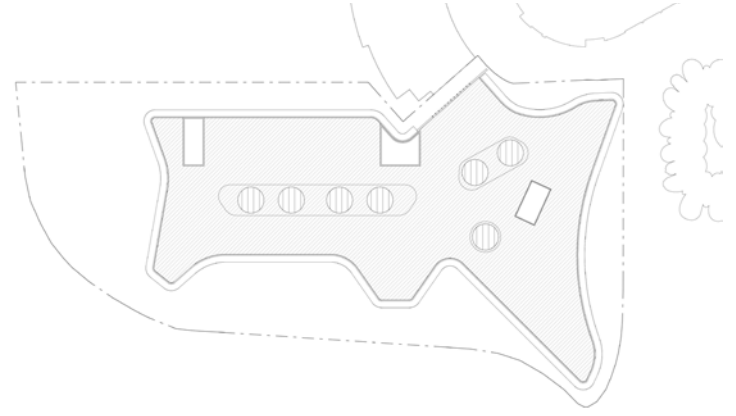
SECOND FLOOR



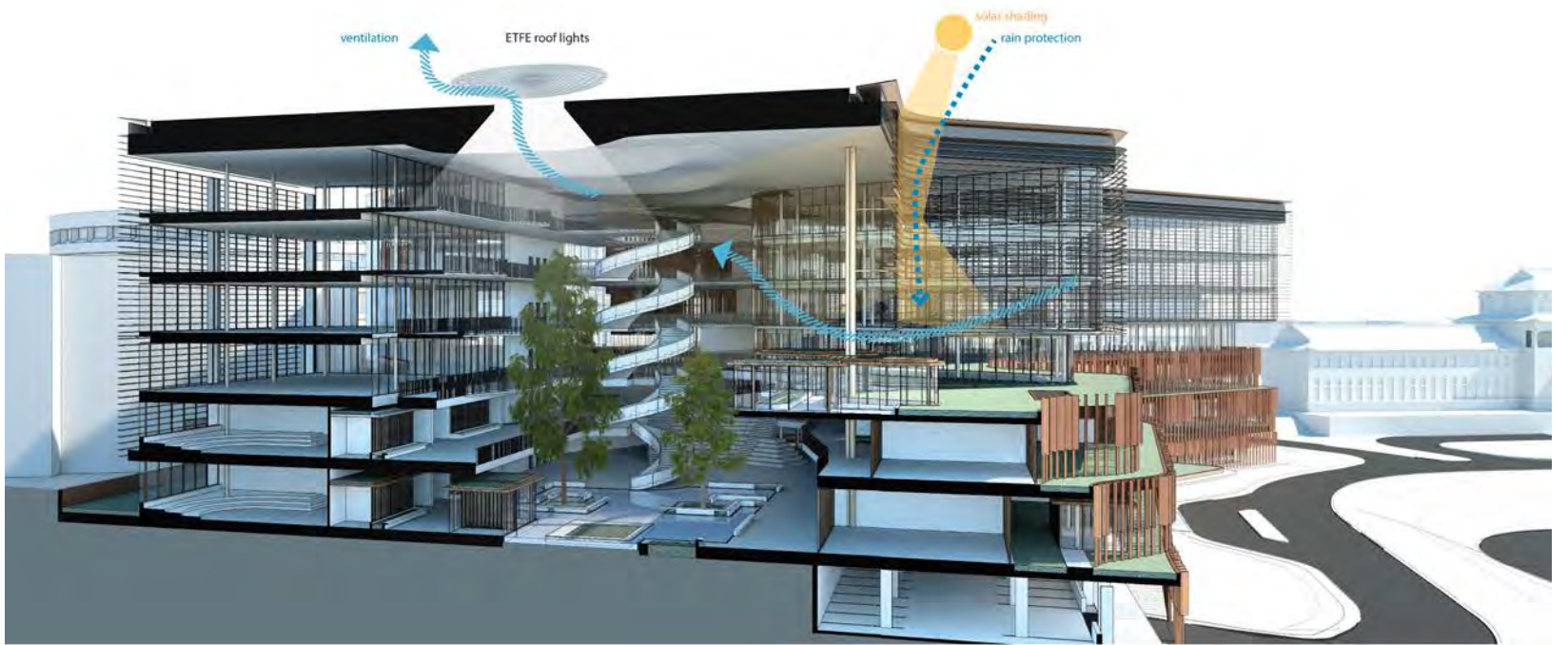
THIRD FLOOR



SIXTH FLOOR



ROOF



SECTIONAL PERSPECTIVE

Our ABS will create a healthy environment for occupants and has sustainability as its core tenet. NTU has led the way of developing new typologies for the Tropical campus and our design for the ABS will deliver another BCA Green Mark Platinum project on campus, reinforcing NTU's focus on sustainability and conceiving buildings as communities.

Whilst sustainable attributes and material selection associated with the targeted Platinum rating are a given, our design is inherently energy and natural resource efficient in the Tropical context. External solar control strategies are simple and effective and large roof overhangs shade the façade and activated outdoor areas. The deep courtyard roof overhang in particular will eliminate solar heat gain through glazed partitions facing into the 'external' heart of the building, allowing transparent glass to be used for truly effective activation of the façade.

The static, low maintenance external façade screening is custom built with long lasting materials, providing additional solar heat gain protection and importantly mitigating glare in workspaces and digital studios. Screened skylights in the expansive courtyard roof overhang provide filtered light to the Great Room and promote airflow and stack effect venting of hot air. Extensive water features in the courtyard provide cooling benefit to social spaces and activated, unconditioned circulation routes.

Despite the north-south orientation of the site, the planning of the building has creatively managed to deliver the bulk of accommodation in narrow floor plates ideally orientated along an east-west axis. Thermal analysis has proven this considered, permeable building form promotes good natural airflow, allowing the building to breathe.

Extensive use of engineered timber technologies is proposed to deliver numerous sustainable advantages over masonry construction: lightweight structure; 'quiet' construction; off-site fabrication with dimensional stability; reduction of wet trades; and sequestration of CO2.

Our ABS will speak as a metaphor for the ideals of NTU as a top global university of world standing. The iconic architecture with its aesthetically inspiring façade and memorable courtyard, realises briefed aspirations and reinforces and enhances the NTU brand name – particularly for the undergraduate cohort.





MASTERPLANNING

COMMERCIAL

EDUCATION & PUBLIC

CULTURAL

RESIDENTIAL

TRANSPORT & INFRASTRUCTURE



The Lower Parti is about Landscape - a continuation of the Yunnan Garden ...
a vertical representation with a rich and articulated base



MASTERPLANNING

COMMERCIAL

EDUCATION & PUBLIC

CULTURAL

RESIDENTIAL

TRANSPORT & INFRASTRUCTURE



APPENDIX A

KIRK HIGHER EDUCATION PORTFOLIO

MASTERPLANNING

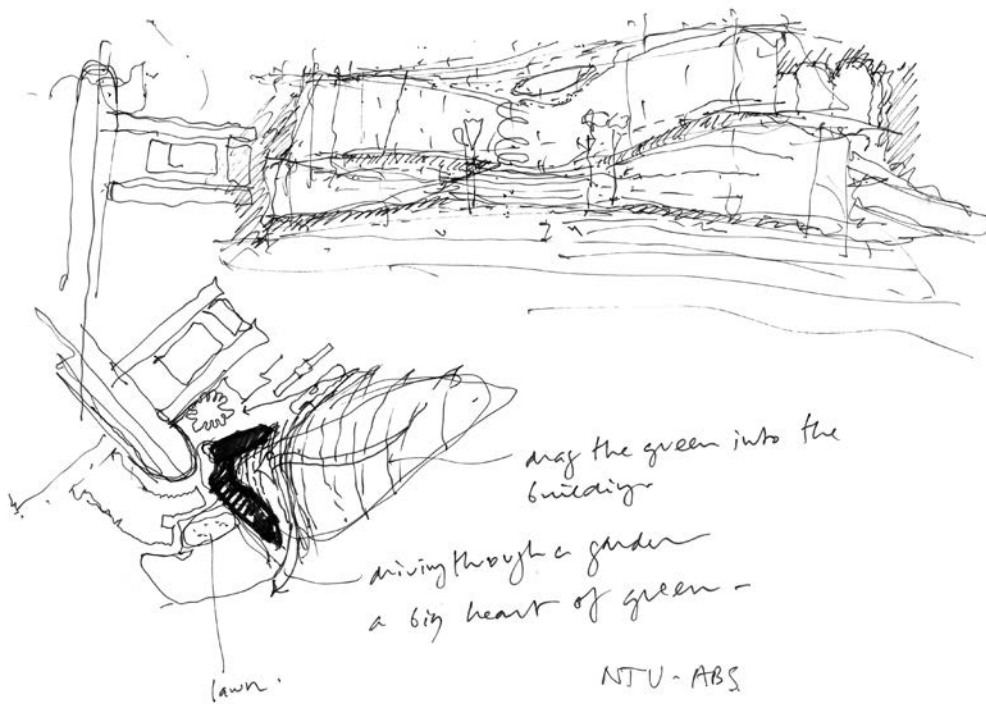
COMMERCIAL

EDUCATION & PUBLIC

CULTURAL

RESIDENTIAL

TRANSPORT & INFRASTRUCTURE



drag the green into the
building

driving through a garden
a big heart of green -

lawn

NTU - ABS

25. 9. 16

KIRK was established in Brisbane, Australia in 1995 as Richard Kirk Architect. The practice has expertise in architecture, urban design and environmentally sustainable design, with studios in Brisbane, Beijing and Kuala Lumpur.

KIRK has a great interest in the role that well made buildings play in the communities and environments they intend to serve.

With each project we work to make evocative places and buildings that are memorable and clearly legible in terms of how they are spatially organised and constructed.

The practice has a deep passion for developing construction methods and material knowledge to produce unique buildings that respond directly to each client, brief and circumstance.

KIRK's approach to client briefs is not only responsive but also pro-active. The diversity of projects within the practice has developed a robust design sensibility and process.

Each project has the same team leader for all phases which ensures the continual refinement of ideas and building quality and a single point of contact for the client.

It is through our efforts in the planning process, attention to detail and an intimate approach during construction that fine architecture is made at every scale.

Current and recent projects range in values from \$0.2M to \$1B. The diversity of projects include furniture, landscape, single residences, interior fitouts, university and school buildings, master planning, infrastructure and urban design.

KIRK utilises 3D CAD & BIM technology in each project to enable better outcomes through visualisation of our designs to clients, integration of building services and detailed design resolution.

All architectural services are produced within a Quality Assured process. KIRK has third-party certification in ISO9001.

NTU LEARNING HUB

SINGAPORE



A vibrant campus heart that promotes active social learning - a building that opens and embraces a revitalised landscape setting.

The Learning Hub is defined as a series of 'learning platforms' tuned to setting and place, allowing a multitude of futures in learning patterns, modes and technologies. Its open curves, translucency and permeability create a civic gesture at the North Spine, creating cross-campus links to the buildings around.

The design response transcends the cellular planning model and becomes a more effective open learning environment allowing NTU to move away from traditional, passive learning.

PROGRAM Lecture theatres, TEAL facilities, student hub and chillout zones, food and retail tenancies, workshop space.

CLIENT Nanyang Technological University, Singapore

AREA 14,500m² GFA

COST \$43.5M SGD

STATUS Tender

*Local Architects DCA Architects Pte Ltd



MASTERPLANNING

COMMERCIAL

EDUCATION & PUBLIC

CULTURAL

RESIDENTIAL

TRANSPORT & INFRASTRUCTURE





MASTERPLANNING

COMMERCIAL

EDUCATION & PUBLIC

CULTURAL

RESIDENTIAL

TRANSPORT & INFRASTRUCTURE



UQ ADVANCED ENGINEERING BUILDING

BRISBANE, AUSTRALIA

AEB establishes a new benchmark for sustainability and explores new possibilities for teaching and learning spaces in engineering disciplines.

The vision for the project was to create a building to celebrate, collaborate, create, learn, innovate and sustain, all within an integrated engineering landscape.

AEB is designed to stimulate innovation, education and awareness of advanced materials and manufacturing processes. The structure of the building is as open as possible, to allow a high level of visibility of processes and equipment to visitors and staff alike.

AEB is a 5 Star Green Star certified building, achieved through the use of simple systems, including a central atrium to introduce tempered air and light into the building, highly efficient façades, mixed mode ventilation, night purging and excellent daylight levels.

PROGRAM Research facilities, teaching spaces and office accommodation for the School of Civil Engineering and the Queensland Centre for Advanced Materials Processing and Manufacturing (AMPAM)

CLIENT University of Queensland

AREA 20,000m²

COST \$135M AUD

STATUS Completed

AWARDS

2014 AIA National Sir Zelman Cowen Award, Emil Sodersten Award, National Award for Sustainable Architecture

2014 AIA Qld FDG Stanley Award, GHM Addison Award, Harry Marks Award, John Dalton Award, Regional Commendation

2014 Australian Timber Design Awards for Engineered Timber, and Recycled Timber

Project in joint venture with Hassell.





MASTERPLANNING

COMMERCIAL

EDUCATION & PUBLIC

CULTURAL

RESIDENTIAL

TRANSPORT & INFRASTRUCTURE



QUT CREATIVE INDUSTRIES PRECINCT 2

BRISBANE, AUSTRALIA

CIP2 is a world class innovative creative industries facility, with twelve dedicated and inter-disciplinary studios for Dance, Music, Drama and Visual Arts.

The building's key function as the new home for the creative disciplines was an opportunity to make a landmark facility for both University and community. The co-location of diverse creative disciplines provided an opportunity for the building to have a rich expression.

CIP2 is connected to the broader university and arts community via new digital technologies to facilitate the creation of an internationally networked hub of creative enterprise and cultural experience.

Re-purposed Heritage Listed buildings have been carefully restored and adjacent new works have been sensitively designed & sited.

KIRK's extensive experience with acoustic separation and structural isolation detailing is leveraged to stack the double height studio volumes vertically, maximising ground floor public and exhibition areas and provide transparency (through

extensive glazing) into the dynamic dance, movement and music studios.

The CIP2 project has achieved a 5 star Green Star Design rating and is targeting a 5 star As-built rating.

PROGRAM Multi-purpose education facility comprising of teaching and learning spaces, office accommodation and specialist studios for the creative arts faculty (music, dance, drama and visual arts)

CLIENT Queensland University of Technology

AREA 12,000m²

COST \$80M AUD

STATUS Completed

*Project in joint venture with Hassell.





MASTERPLANNING

COMMERCIAL

EDUCATION & PUBLIC

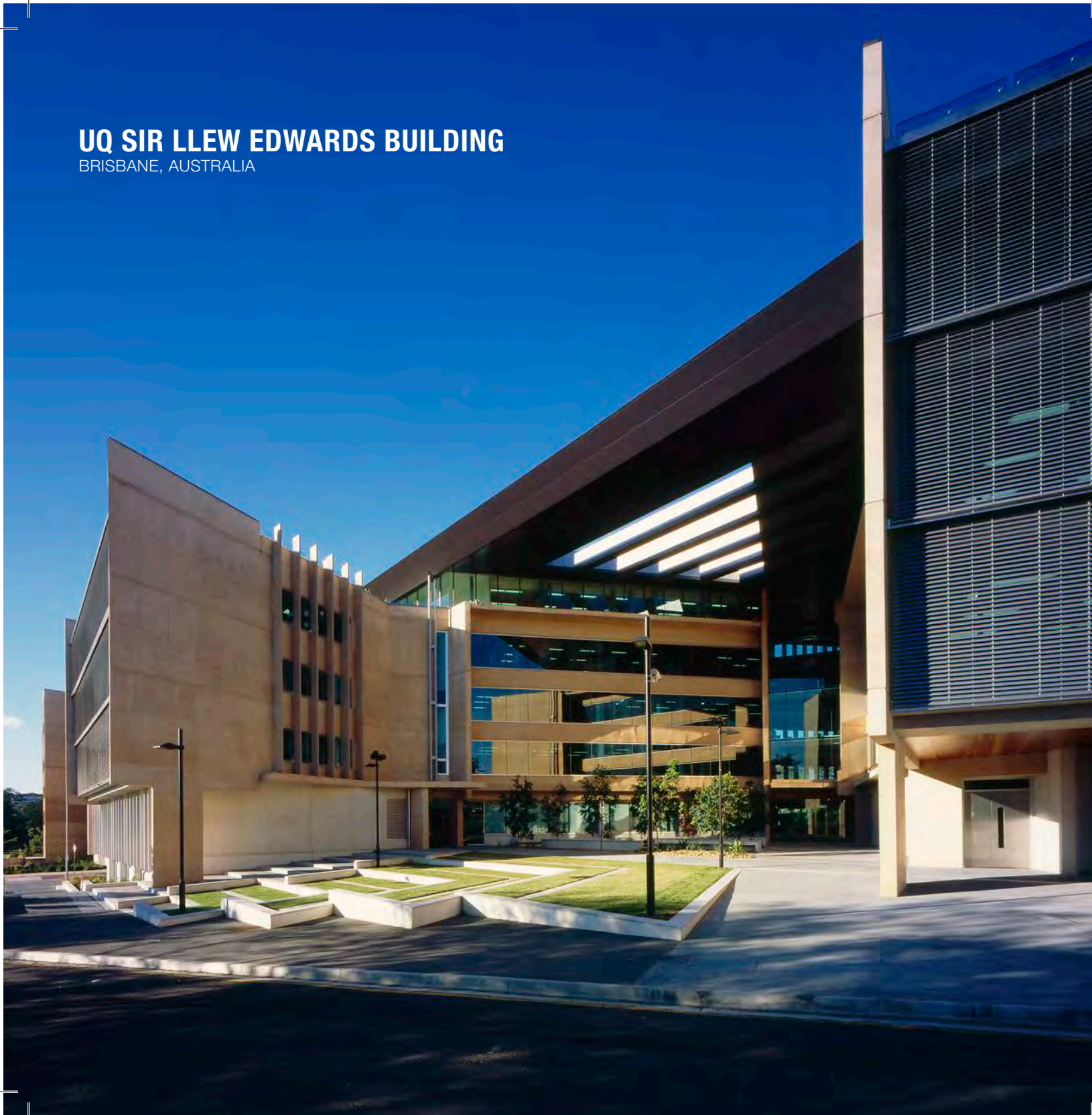
CULTURAL

RESIDENTIAL

TRANSPORT & INFRASTRUCTURE

UQ SIR LLEW EDWARDS BUILDING

BRISBANE, AUSTRALIA



The six storey multi-purpose teaching building for the International Language School occupies the most prominent site on Campus and overlooks the University Forecourt.

The project responds to the site by addressing its largely landscaped setting and the surrounding buildings. The building's success lies in the manner in which it engages with the existing campus master plan and provides the University with a new building typology that exemplifies advances in the inclusion of Environmentally Sustainable Design (ESD) features in university buildings (natural day lighting, rainwater re-use and monitoring).

PROGRAM Multi-purpose teaching rooms, lecture theatre, offices, breakout terraces, TEAL (Technology Enabled Active Learning) Environments.

CLIENT University of Queensland

AREA 10,000m²

COST \$40M AUD

STATUS Completed

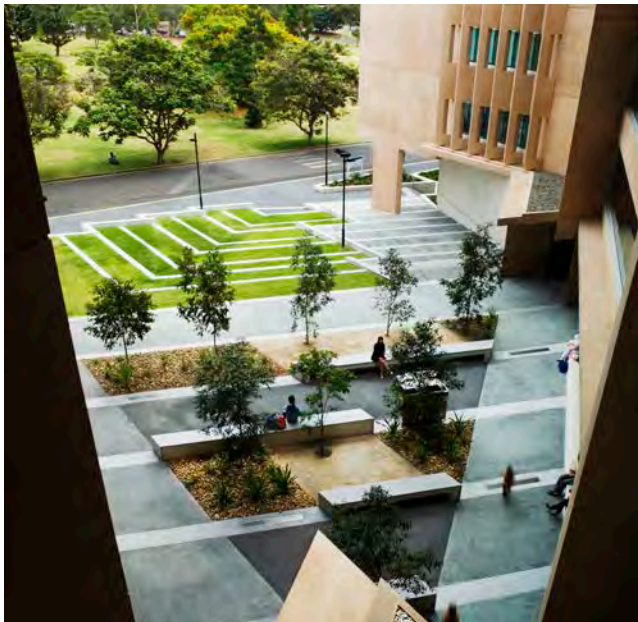
AWARDS

2009 RAIA QLD FDG Stanley Award for Public Architecture

2009 CCAA Public Domain Award

2009 RAIA QLD Regional Commendation

2008 IES Lighting Design Awards of Excellence



MASTERPLANNING

COMMERCIAL

EDUCATION & PUBLIC

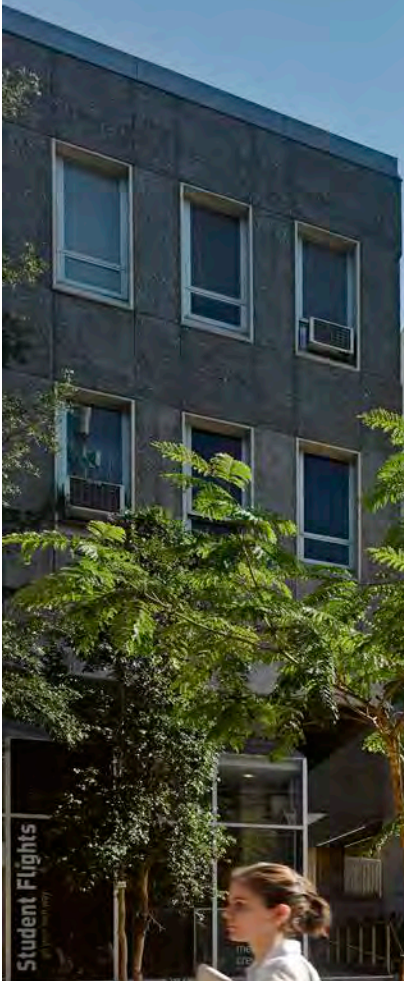
CULTURAL

RESIDENTIAL

TRANSPORT & INFRASTRUCTURE

UQ LEARNING INNOVATION BUILDING

BRISBANE, AUSTRALIA



Student Flights
University of Queensland



A design that is sensitive to surrounding heritage buildings, pedestrian links and campus activity; resulting in a complex external form and transparent facades to display internal activities to the wider campus.

The site is located in a prominent precinct with the University of Queensland's St Lucia campus and is situated between existing heritage listed university buildings as part of the Great Court Complex.

The design process intentionally maintains and improves 'hidden' or secondary pedestrian links to surrounding spaces and buildings. Public courtyard space adds to an existing sequence of external spaces within the campus, including the Great Court.

A three-storey high void space links the horizontal floor plates vertically, improving the internal environment and contributing to the overall efficiency of the building.

PROGRAM Office space dedicated to the innovation of teaching and learning; audio-visual integrated landscape courtyards, and flexible seminar spaces.

CLIENT University of Queensland

AREA 2,250m²

COST \$12.5M AUD

STATUS Completed



MASTERPLANNING

COMMERCIAL

EDUCATION & PUBLIC

CULTURAL

RESIDENTIAL

TRANSPORT & INFRASTRUCTURE

UQ BUSINESS SCHOOL

QUEENSLAND, AUSTRALIA



Concept Design for a new Business School for the University of Queensland



MASTERPLANNING

COMMERCIAL

EDUCATION & PUBLIC

CULTURAL

RESIDENTIAL

TRANSPORT & INFRASTRUCTURE

NORTH QUEENSLAND UNIVERSITY BUILDING

QUEENSLAND, AUSTRALIA



Concept Design for a new Biosecurity Precinct for a leading tropical health research University.



MASTERPLANNING

COMMERCIAL

EDUCATION & PUBLIC

CULTURAL

RESIDENTIAL

TRANSPORT & INFRASTRUCTURE



BRISBANE STUDIO

11 Logan Road
Q 4102 Australia
+61 7 3434 8000

November 2016

www.kirk.asia
mail@richardkirkarchitect.com

KUALA LUMPUR STUDIO

The Troika, B-8-3, 19 Persiaran KLCC,
50 450 Kuala Lumpur, Wilayah Persekutuan, Malaysia
+603 2161 1887





